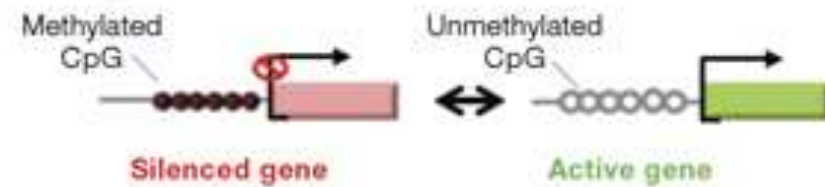
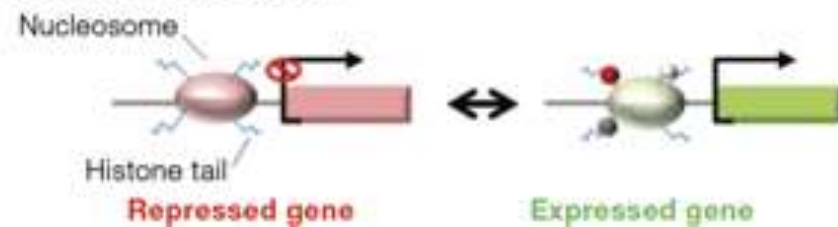
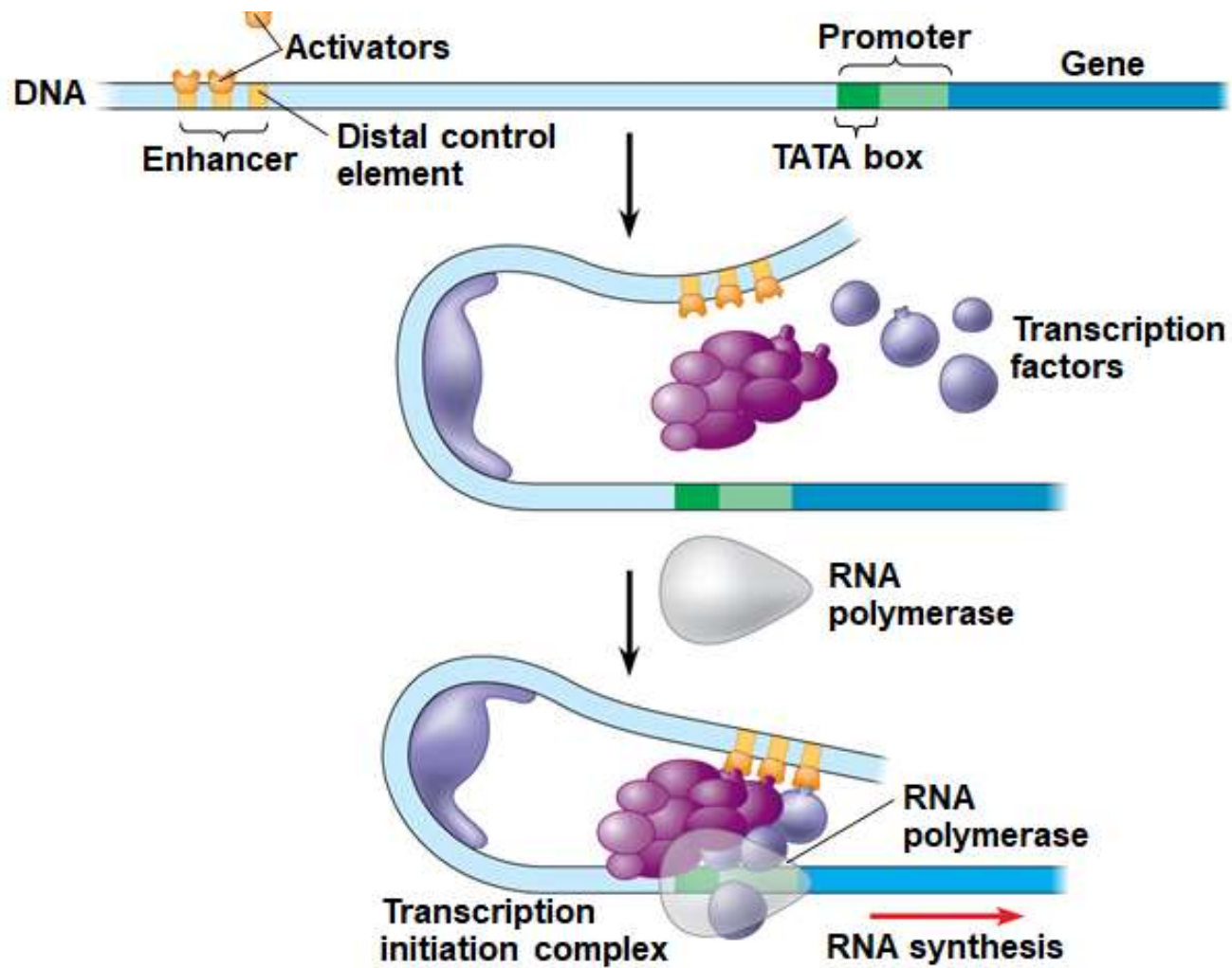
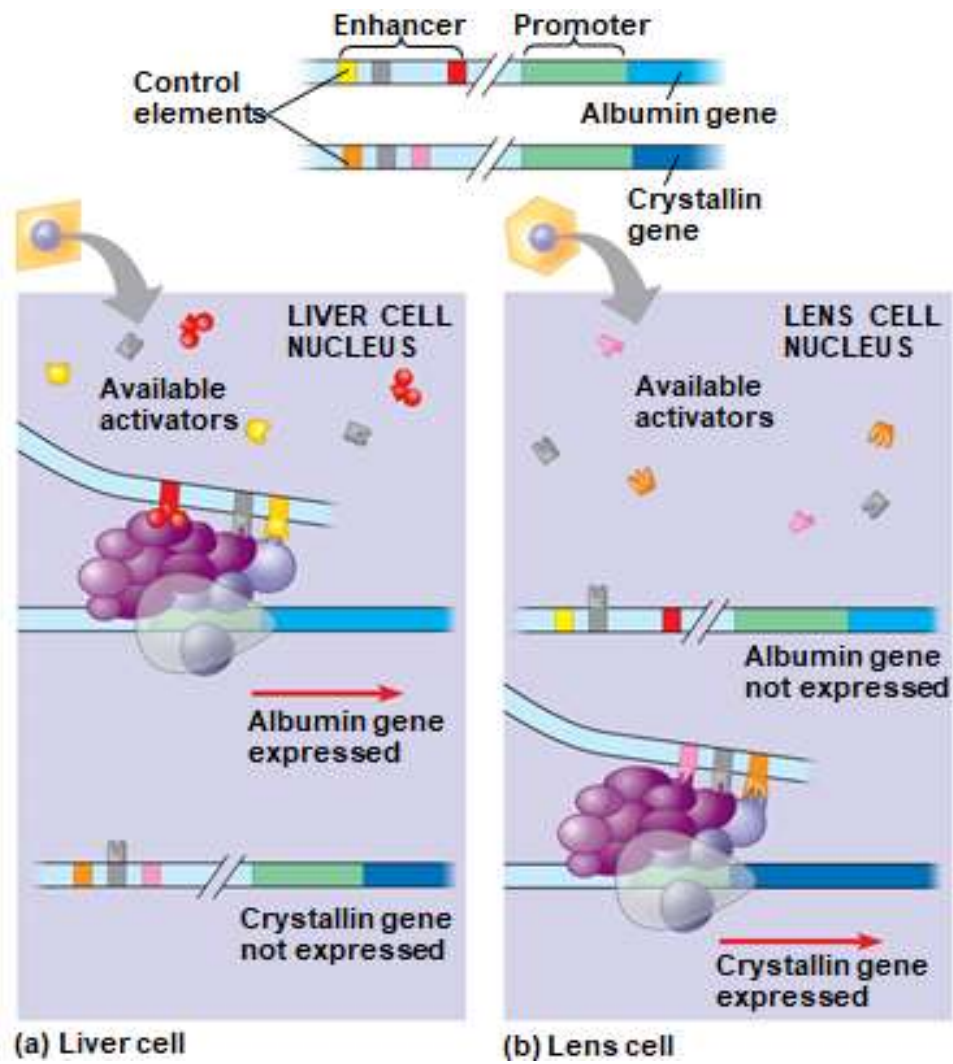
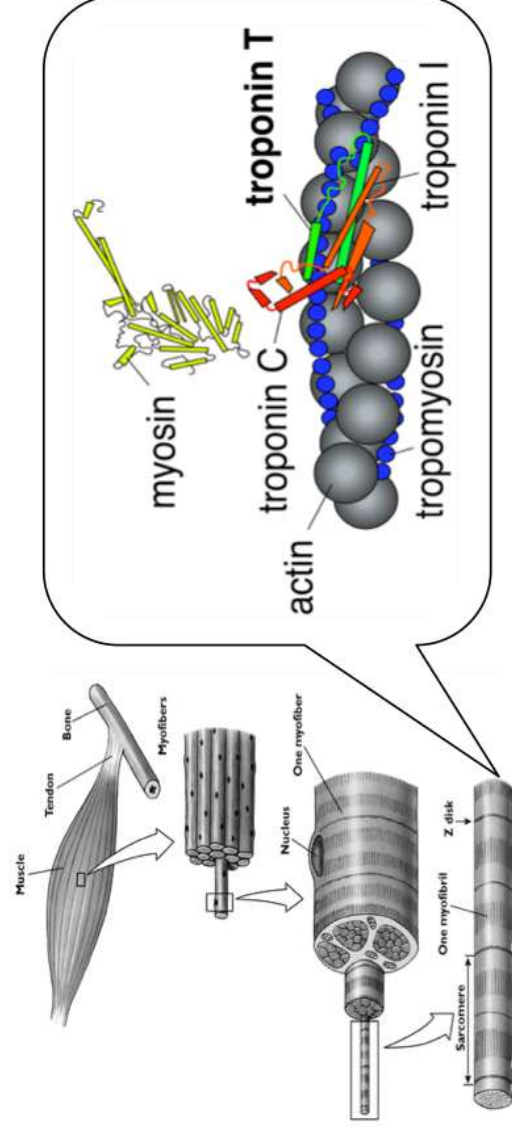
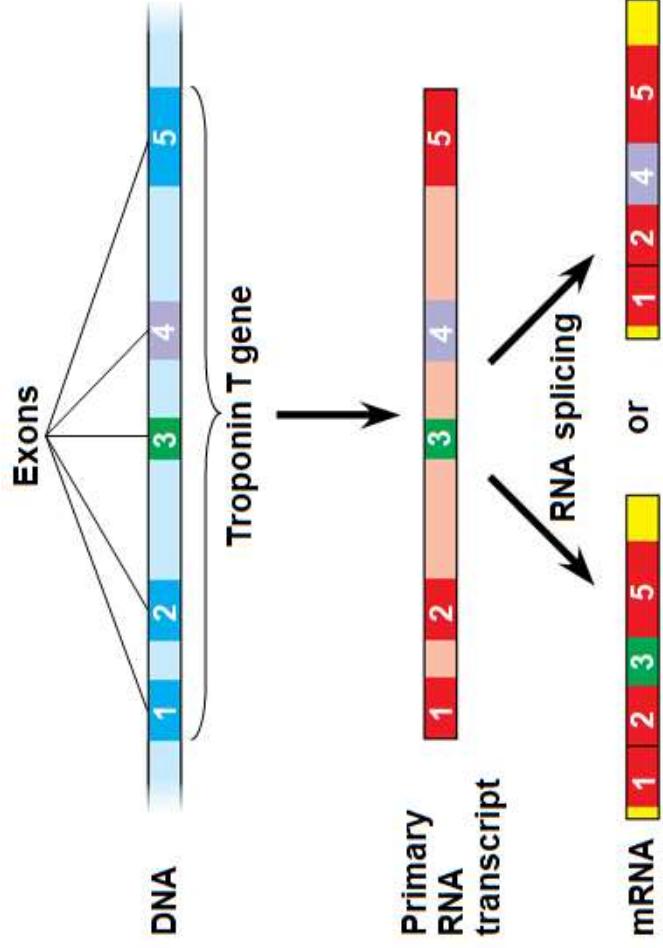


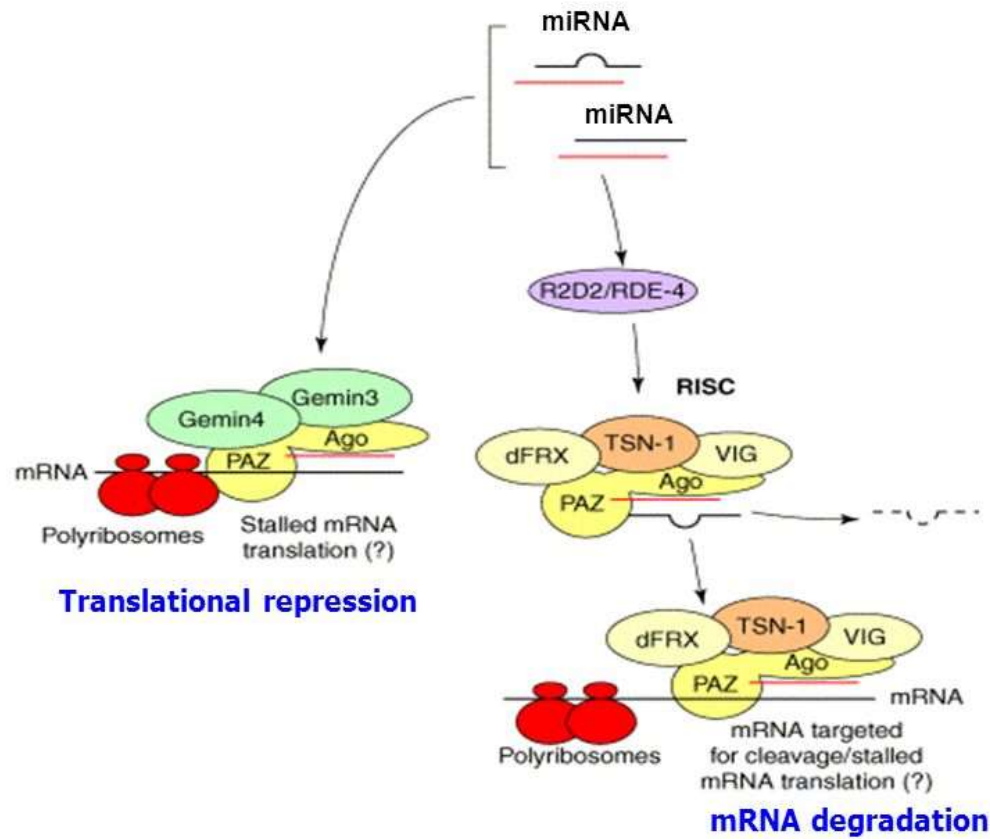
**a****Active chromatin****Inactive chromatin****b****DNA methylation****Histone modifications**

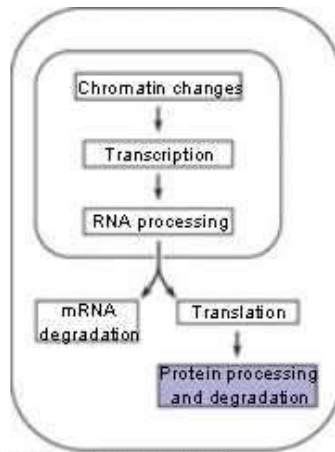






# microRNA mediated gene silencing





**1** Multiple ubiquitin molecules are attached to a protein by enzymes in the cytosol.

**2** The ubiquitin-tagged protein is recognized by a proteasome, which unfolds the protein and sequesters it within a central cavity.

**2** Enzymatic components of the proteasome cut the protein into small peptides, which can be further degraded by other enzymes in the cytosol.

